

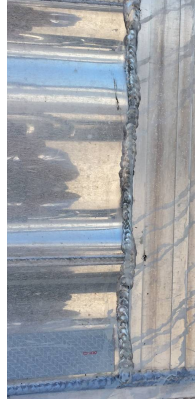
# HICKS T6

## Quality Features

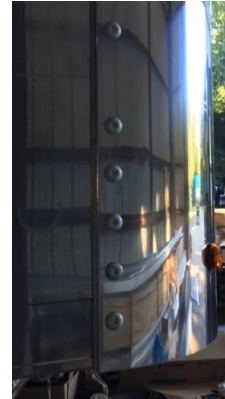
Hicks riveted seams are much cleaner than welded seams



Hicks smooth sides are polished giving a mirror-like finish and provide an excellent surface for customer's logo.



Front corner on a leading aluminum dump trailer



Front corner on a **Hicks T6**



Rear corner on a **Hicks T6**

Hicks cylinder support assembly is steel. This is an area of high load where welded aluminum structures are limited.



The subframe is constructed of trapezoidal members. Extensive FEA's and road testing prove it to be a durable component in this high load area.

The light box and mudflap bracket are modular and more serviceable.



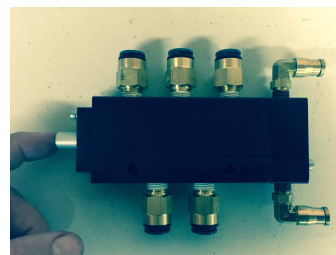
The tailgate lock pin is simple to service. And, the pin can be rotated once when one side is worn increasing the life of components in this high-wear area.

Hicks 93" inside width keeps the sides lower for easier loading.



With no hoist housing and a 12-foot wide UHMW liner, a Hicks body dumps quicker and cleaner! The liner is 1/2" thick in the rear 4 feet for increased liner life.

The kingpin plate has rollers to support the body. These are serviceable and eliminate the wear surface with the body stops.



Hicks air valves are equipped with a manual override. When systems get old, dirty and stick, this lets the load get delivered and the trailer home avoiding a costly field service call.